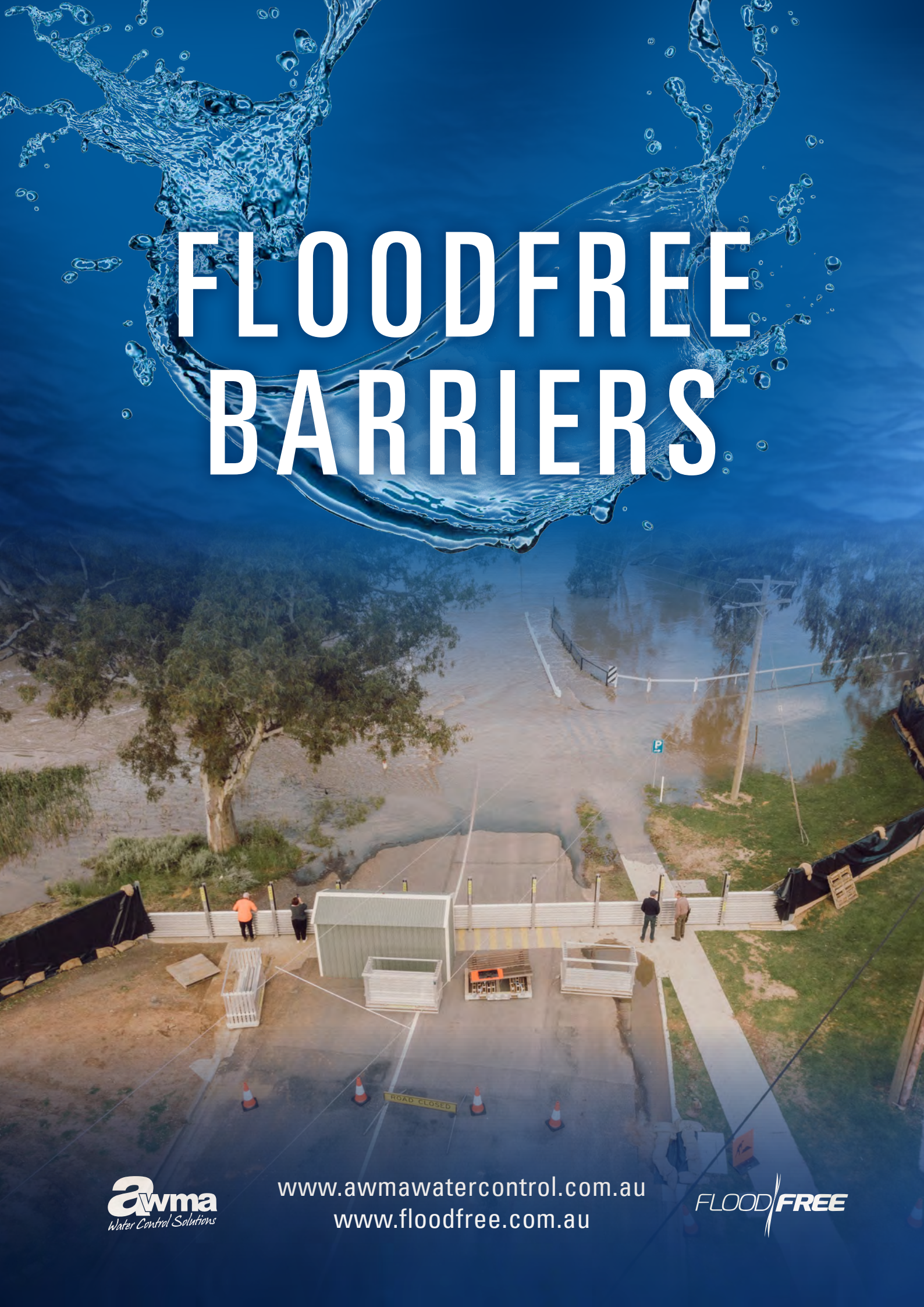


FLOODFREE BARRIERS



DEMOUNTABLE FLOOD BARRIERS

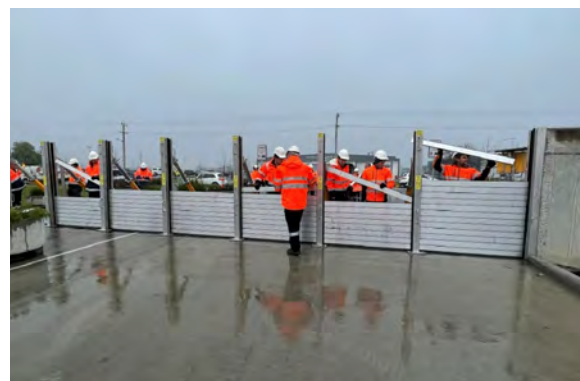
Demountable Flood Barriers allow property and asset owners to manually deploy their own protection barrier to isolate flood and storm waters in and around existing infrastructure.

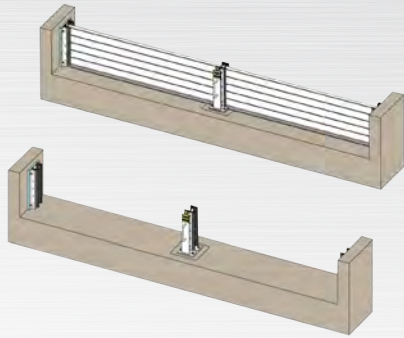
FEATURES & BENEFITS

- Proven flood protection.
- Designed to suit square and rectangular openings of an infinite length.
- Modular segments are fabricated in 100mm high increments.
- Permanent end frames and permanent footings enhance rapid deployment.
- Segments consist of extruded section with embedded seals.
- Storage solutions and transportation trolleys available.
- Economical, proven flood prevention solution.

APPLICATIONS

- Residential and commercial building protection.
- Liftwell barriers.
- Driveway barriers.
- Doorway barriers.
- Ventilation outlet isolation.
- Basement barriers.
- Access barriers.





DEMOUNTABLE FLOOD BARRIERS

DESIGN

DESIGN SUPPORT

- AWMA's R&D and Engineering teams are available under Early Contractor Involvement (ECI), to assist in developing flood barrier solutions for bespoke green-field and brown-field sites.

SIZES

- All AWMA Flood Barriers are custom sized to ensure they meet specific site requirements.

MATERIALS

- AWMA select materials to meet a minimum design life of 25 years. Where required, AWMA can offer higher grade materials, coatings and protection systems to extend the design life to 100+ years.
- Marine grade aluminium barrier segments and posts.
- Materials used in the construction of AWMA's Flood Barrier range have a high corrosion resistance and can be operated for many years with minimal maintenance.

MAINTENANCE

- The AWMA FloodFree range has a minimum 25 year design life.
- Minimal maintenance is required ensuring low 'whole of life costs'.

MANUFACTURE

QUALITY

- All AWMA products meet relevant Australian and international standards.
- All fabrication is in accordance with the 'Australian Technical Specification for Fabricated Water Control Infrastructure'.
- AWMA hold international accreditations for ISO 9001; Quality, ISO 14001; Environment and ISO 45001 OH&S management.
- AWMA's Integrated Management System aims to provide a framework to deliver products and services that consistently exceed customer expectations.

INSTALLATION

MOUNTING OPTIONS

- Barriers are designed to retrofit existing infrastructure or 'green field sites', they are also suitable for 'brown field sites'.
- AWMA offer install supervision for all turn-key installations.

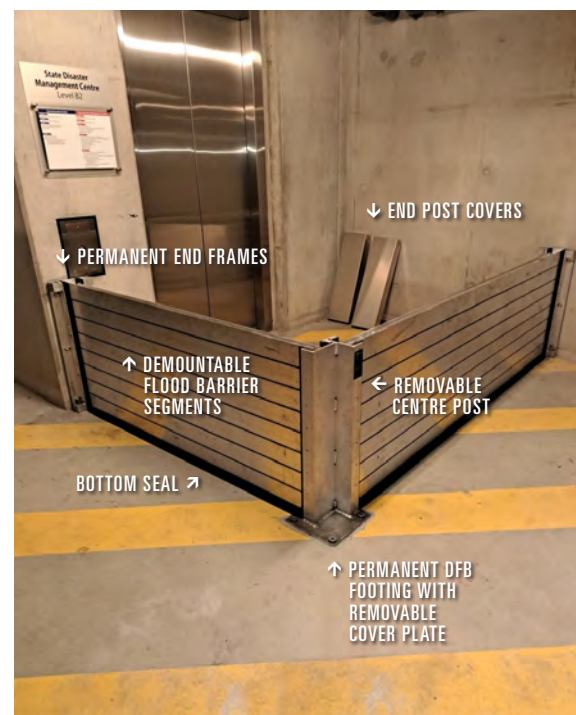
DEPLOYMENT

- The AWMA Demountable Flood Barriers are designed to be manually deployed by a single operator.
- Storage Racks are available, custom manufactured from marine grade aluminium to suit the number of barriers and posts required. Can include wheels or forklift provision.

COMMISSIONING

DOCUMENTATION AND TRAINING

- Detailed documentation on operation, testing procedures and maintenance will be provided with all AWMA flood defence systems.
- Comprehensive on and/or off site training available.



RETRACTABLE FLOOD BARRIERS

The Retractable Flood Barrier is a sliding floodgate designed specifically to isolate large openings as part of a total flood defence system.

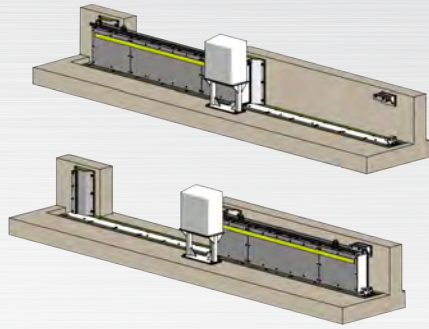
FEATURES & BENEFITS

- Effective solution for small to large openings.
- Proven AWMA horizontal sliding gate design.
- Low maintenance design ensures the flood barrier remains ready to deploy at all times.
- Manual and actuated deployment options available.

APPLICATIONS

- Typically installed on driveway entry points.
- Residential and commercial building protection.
- Liftwells.
- Driveways.
- Doorways.
- Basement entry.
- Pedestrian access.
- Car parks.
- Car lifts / car stackers.





RETRACTABLE FLOOD BARRIERS

DESIGN

DESIGN SUPPORT

- AWMA's R&D and Engineering teams are available under Early Contractor Involvement (ECI), to assist in developing flood barrier solutions for bespoke green-field and brown-field sites.

SIZES

- Customisable to suit specific site requirements.

MATERIALS

- AWMA select materials to meet a minimum design life of 25 years. Where required, AWMA can offer higher grade materials, coatings and protection systems to extend the design life to 100+ years.
- Marine grade aluminium construction.
- Materials used in the construction of AWMA's Flood Free range have a high corrosion resistance and can be operated for many years with minimal maintenance.
- Options include coloured coatings.

MAINTENANCE

- The AWMA Flood Free range has a minimum 25 year design life.
- Minimal maintenance is required ensuring low 'whole of life costs'.

MANUFACTURE

QUALITY

- All AWMA products meet relevant Australian and international standards.
- AWMA hold international accreditations for ISO 9001; Quality, ISO 14001; Environment and ISO 45001 OH&S management.
- AWMA's Integrated Management System aims to provide a framework to deliver products and services that consistently exceed customer expectations.

INSTALLATION

MOUNTING OPTIONS

- Barriers are designed to retrofit existing infrastructure or 'green field sites', they are also suitable for 'brown field sites'.
- AWMA offer install supervision for all turn-key installations.

DEPLOYMENT

- The AWMA Retractable Flood Barrier is designed to function via manual and/or actuated control.
- The gate leaf will travel sideways to close the gap in the existing wall, completing the flood barrier to protect the property from rising water levels.

COMMISSIONING

DOCUMENTATION AND TRAINING

- Detailed documentation on operation, testing procedures and maintenance will be provided with all AWMA flood defence systems.
- Comprehensive on and/or off site training available.



CONCEALED FLOOD BARRIERS

The Concealed Flood Barrier is a self-actuating flood protection barrier that rises, vertically, via floatation to the specified flood height.

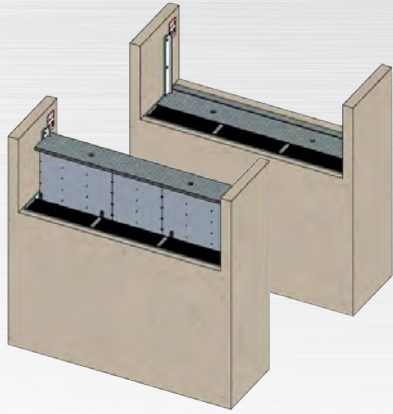
FEATURES & BENEFITS

- The barrier is permanently installed below ground level at the isolation point, ready for deployment when required.
- Rising water levels cause an automatic response, elevating the isolation barrier via floatation.
- The barrier then retracts below ground level as water levels decrease.
- Suitable for small to large openings.
- Low maintenance design.
- Low aesthetic impact.

APPLICATIONS

- Basement and carpark access points.
- Pedestrian access and pathways.
- Flood levees.
- Residential and commercial property protection.
- Doorways.
- Loading Docks.
- Driveways.





CONCEALED FLOOD BARRIERS

DESIGN

DESIGN SUPPORT

- AWMA's R&D and Engineering teams are available under Early Contractor Involvement (ECI), to assist in developing flood barrier solutions for bespoke green-field and brown-field sites.
- The FloodFree Concealed Flood Barrier is manufactured from marine grade aluminium and shall be trafficable for Class G medium traffic maximum 10Tn GVM as per AS1170.1 when fully lowered as standard.
- Heavy duty solution available subject to approval by AWMA engineering as part of the design process.

SIZES

- Customisable to suit specific site requirements.
- Minimum height 300mm.
- After 300mm, the next height is 500mm, then height increases in 250mm increments, up to 1500mm.

MATERIALS

- AWMA select materials to meet a minimum design life of 25 years. Where required, AWMA can offer higher grade materials, coatings and protection systems to extend the design life to 100+ years.
- Marine grade aluminium.
- Materials used in the construction of AWMA's Flood Free range have a high corrosion resistance and can be operated for many years with minimal maintenance.

SEALING

- The seal performance of AWMA Flood Gates exceeds that required by the 'Australian Technical Specification for Fabricated Water Control Infrastructure'.

MAINTENANCE

- The AWMA Flood Gate range has a minimum 25 year design life.
- Minimal maintenance is required ensuring low 'whole of life costs'.

MANUFACTURE

QUALITY

- All AWMA products meet relevant Australian and international standards.
- All fabrication is in accordance with the 'Australian Technical Specification for Fabricated Water Control Infrastructure'.
- AWMA hold international accreditations for ISO 9001; Quality, ISO 14001; Environment and ISO 45001 OH&S management.

- AWMA's Integrated Management System aims to provide a framework to deliver products and services that consistently exceed customer expectations.

INSTALLATION

MOUNTING OPTIONS

- Barriers are designed to retrofit existing infrastructure or 'green field sites', they are also suitable for 'brown field sites'.
- AWMA offer install supervision for all turn-key installations.

DEPLOYMENT

- The AWMA Concealed Flood Barrier is designed to self-deploy ahead of rising flood waters.
- No operator intervention is required.
- Variety of audio and visual warning systems available for most barriers.

COMMISSIONING

DOCUMENTATION AND TRAINING

- Detailed documentation on operation, testing procedures and maintenance will be provided with all AWMA flood defence systems.
- Comprehensive on and/or off site training available.



TILTING FLOOD BARRIERS

The Tilting Flood Barrier is installed horizontally at ground level. It is self-actuating, deploying via floatation, tilting upwards to the specified flood height.

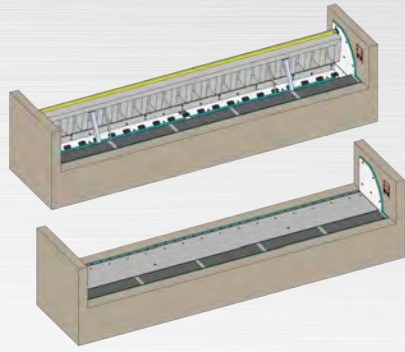
FEATURES & BENEFITS

- Tilting Flood Barriers may be Passive or Actuated.
- Fabricated from marine grade aluminium.
- Designed for strength, high corrosion resistance and long asset life.
- Low maintenance design.
- Fully trafficable.
- Excellent sealing.

APPLICATIONS

- Commercial.
- Residential.
- Basement Car Park Entrances.
- Building Entry.





TILTING FLOOD BARRIERS

DESIGN

DESIGN SUPPORT

- AWMA's R&D and Engineering teams are available under Early Contractor Involvement (ECI), to assist in developing flood barrier solutions for bespoke green-field and brown-field sites.
- All FloodFree Barriers are purpose-designed, engineered and manufactured.
- Project partners receive full design support to ensure the product delivered will be engineered and certified to withstand site specific worse case scenarios for expected flood water height, debris loading, deployment times etc.
- The Passive Tilting Flood Barrier is manufactured from marine grade aluminium and shall be trafficable for Class G medium traffic maximum 10Tn GVM as per AS1170.1 when fully lowered as standard.
- Heavy duty solution available subject to approval by AWMA engineering as part of the design process.
- Optional extras for actuated systems include battery charged backup systems (to ensure flood protection during power black-outs), warning lights and SMS alarms.

SIZES

- Minimum height 500mm, plus 250mm increments up to 1500mm.
- Alternative heights available subject to AWMA engineering approval.

MATERIALS

- Materials used in the construction of AWMA's FloodFree range have a high corrosion resistance and can be operated for many years with minimal maintenance.

MAINTENANCE

- The AWMA Flood Gate range has a minimum 25 year design life.
- Minimal maintenance is required ensuring low 'whole of life costs'

MANUFACTURE

QUALITY

- All AWMA products meet relevant Australian and international standards.
- AWMA hold international accreditations for ISO 9001; Quality, ISO 14001; Environment and ISO 45001 OH&S management.
- AWMA's Integrated Management System aims to provide a framework to deliver products and services that consistently exceed customer expectations.

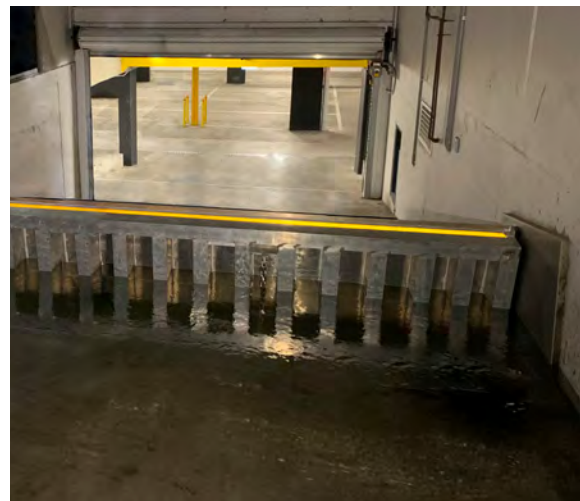
DEPLOYMENT

- Tilting Flood Barriers may be Passive or Actuated.
- Passive Tilting Flood Barriers deploy automatically, using principles of buoyancy to ensure barriers raise ahead of flood waters. The passive flood barrier will deploy and retract as required, without any human interaction, providing complete peace of mind.
- Powered Tilting Flood Barriers use level sensors to deploy the tilting flood barrier as required, with the additional advantage of manual and/or local control.

COMMISSIONING

DOCUMENTATION AND TRAINING

- Detailed documentation on operation, testing procedures and maintenance will be provided with all AWMA flood defence systems.
- Comprehensive on and/or off site training available.



SWING FLOOD BARRIERS

The Swing Flood Barrier is an outward opening hinged floodgate designed to provide effective isolation of floodwaters up to the height of the gate.

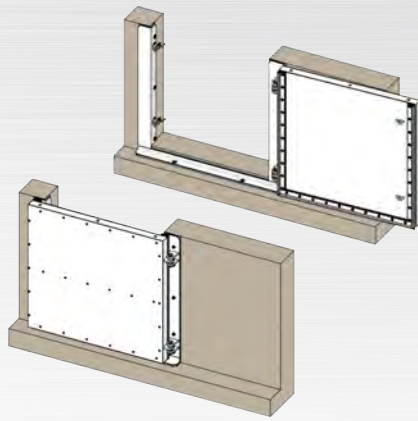
FEATURES & BENEFITS

- Swing Barriers are manufactured from marine grade aluminium.
- A manual locking mechanism(s) sures the gate in the closed position.
- Seals are manufactured from UV stabilised plasticised PVC.
- Seal frames are manufactured from aluminium or stainless steel and are designed for face mount installation onto the wall of a building, levee or other structure.
- Swing Barriers can be supplied as either right or left hand hinged.
- Swing flood barriers are supplied with a mill finish as standard.
- Optional coating of AWMA Swing Barriers is available in any colour to integrate with the surrounding building or structure.
- Full perimeter sealing available.
- Locking mechanisms may be custom latches or handle assemblies.



APPLICATIONS

- Pedestrian access.
- Basement entry.
- Utility Boxes.
- Doorways.
- Liftwells.
- Bunds / Levees.
- Access hatches.



SWING FLOOD BARRIERS

DESIGN

DESIGN SUPPORT

- AWMA's R&D and Engineering teams are available under Early Contractor Involvement (ECI), to assist in developing flood barrier solutions for bespoke green-field and brown-field sites.

SIZES

- Customisable to suit specific site requirements.

MATERIALS

- AWMA select materials to meet a minimum design life of 25 years. Where required, AWMA can offer higher grade materials, coatings and protection systems to extend the design life to 100+ years.
- Marine grade aluminium, stainless steel.
- Materials used in the construction of AWMA's Flood Free range have a high corrosion resistance and can be operated for many years with minimal maintenance.

MAINTENANCE

- The AWMA Flood Gate range has a minimum 25 year design life.
- Minimal maintenance is required ensuring low 'whole of life costs'.

MANUFACTURE

QUALITY

- All AWMA products meet relevant Australian and international standards.
- AWMA hold international accreditations for ISO 9001; Quality, ISO 14001; Environment and ISO 45001 OH&S management.
- AWMA's Integrated Management System aims to provide a framework to deliver products and services that consistently exceed customer expectations.

INSTALLATION

MOUNTING OPTIONS

- Barriers are designed to retrofit existing infrastructure or 'green field sites', they are also suitable for 'brown field sites'.
- AWMA offer install supervision for all turn-key installations.

DEPLOYMENT

- The Swing Barrier is manually operated.

COMMISSIONING

DOCUMENTATION AND TRAINING

- Detailed documentation on operation, testing procedures and maintenance will be provided with all AWMA flood defence systems.
- Comprehensive on and/or off site training available.



PERSONAL ACCESS FLOOD DOORS

Flood protection for any standard, outward opening door. The FloodFree Personal Access Flood Door (PAFD) is engineered to withstand the designated flood level. Once closed it provides a flood protected, lockable point of entry/exit.

FEATURES & BENEFITS

- Can be used as an everyday door.
- Feels, operates and looks like a regular door.
- Design complies with Australian Standard AS1428.1 (Design Access and Mobility Standards).
- Designed to fit standard door frame sizes.
- Hydrostatically charged door seals designed for optimum sealing performance.
- Multiple frame fixing points securely anchor door frame to wall.
- All fixings concealed.
- Suitable for most types of door hardware.
- Door and frame supplied in a range of powder coat colours.
- Door supplied pre-hung for easy installation.
- Designed for minimal maintenance.
- Permanent protection.
- Corrosion resistant.
- Robust construction.



APPLICATIONS

- Shopping centres.
- Sporting complexes.
- Offices.
- Residential houses.
- Storage facilities.
- Industrial buildings.
- Utility rooms.
- Commercial.



PERSONAL ACCESS FLOOD DOORS

DESIGN

DESIGN SUPPORT

- AWMA's R&D and Engineering teams are available under Early Contractor Involvement (ECI), to assist in developing flood barrier solutions for bespoke green-field and brown-field sites.

SIZES

- Suits standard door sizes (between 720mm - 1286mm wide and 2040mm - 2340mm high).
- Customisable to suit.

MATERIALS

- PAFDs are fabricated from marine grade aluminium, designed for strength, high corrosion resistance, long asset life and minimal maintenance.
- Doors will be supplied with Mortice Locks, handles and door closer unless otherwise specified.

SEALING

- The FloodFree door design, frame and seals will provide water resistant sealing up to 1045mm.
- Full perimeter sealing available.

MAINTENANCE

- The AWMA Flood Gate range has a minimum 25 year design life.
- Minimal maintenance is required ensuring low 'whole of life costs'

MANUFACTURE

QUALITY

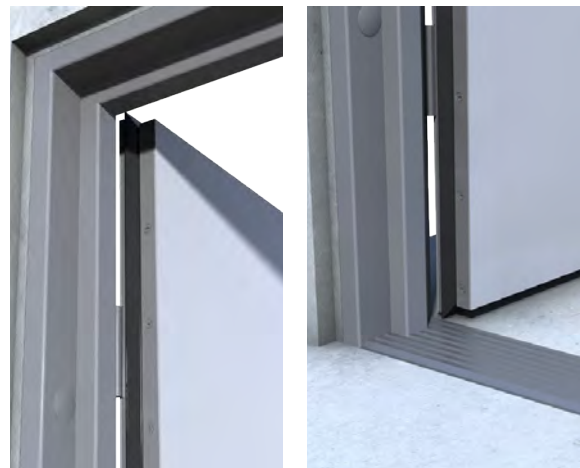
- All AWMA products meet relevant Australian and international standards.
- AWMA hold international accreditations for ISO 9001; Quality, ISO 14001; Environment and ISO 45001 OH&S management.
- AWMA's Integrated Management System aims to provide a framework to deliver products and services that consistently exceed customer expectations.

INSTALLATION

- Installation procedure similar to standard door frames.
- Doors supplied pre-hung and painted with hardware.
- Installation instructions provided.



LOOKS, FEELS AND OPERATES
LIKE A STANDARD DOOR.



www.awmawatercontrol.com.au
www.floodfree.com.au